

CERTIFICATE OF LOCATION OF GOVERNMENT CORNER

EAST QUARTER Corner of Section 25, Township 108, Range 42, 5TH P.M.

STATE OF MINNESOTA, County of MURRAY

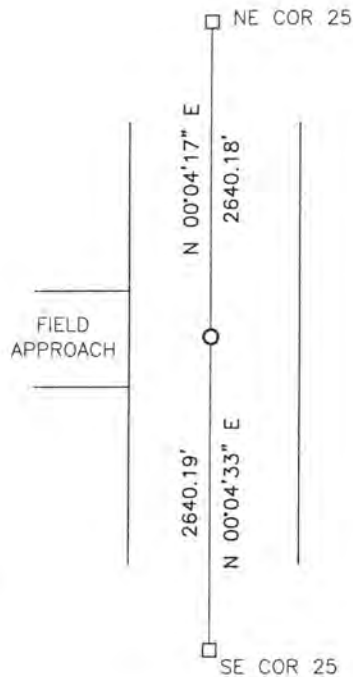
At the corner location shown on the sketch:

On 10/14/16 found a stone

left monument as found, lowered monument, removed monument (explain)

On 10/14/16 placed a 5/8" iron with seal #43844

SKETCH OF REFERENCE TIES



Minnesota State Plane Coordinate
System Murray County Datum
NAD83 (1996)
N: 203183.265
E: 485108.029

Statement of evidence relative to this corner location is on back of page.

I hereby certify that this document and the data contained herein was prepared by me or under my direct supervision.

[Signature] 1/30/17
SIGNATURE DATE

Registration No. 43844

- Land Surveyor, Professional Engineer
 County Surveyor, County Engineer

OFFICE OF THE COUNTY RECORDER

County of MURRAY

I hereby certify that this document was filed in the Co. Recorders office at 9:00 A.M on the 17TH day of FEBRUARY A.D. 2017

County Recorder Evelyn C. Larson

By _____, Deputy

DOCUMENT NO. _____

Statement of Evidence

In August, 1861, J.W. Myers did the original survey of the east line of the township.

On October 17, 1910, J.W. Woolstencroft set a 20 inch stone midway and on line.

On November 21, 2005, Zieske Land Surveying found a 1/2" iron at the corner.

On October 14, 2016, Bueltel-Moseng Land Surveying dug with a backhoe and found a stone. We set a 5/8" iron with seal #43844 at the surface of road over found stone.